

The background features a teal-to-blue gradient with various circular and semi-circular patterns, some with arrows indicating direction. A large circular scale is visible on the left side, with numerical markings from 140 to 260 in increments of 10. The text is centered in the upper half of the image.

# OUTREACH AND EDUCATION

NICOLE GREUX

ST. THOMAS/ST. JOHN

CFMC LIAISON

[Nicolegreux.cfmc@gmail.com](mailto:Nicolegreux.cfmc@gmail.com)

# It's Been a busy quarter!

## Fisher conversations and Port Samples

Reminding fishers of the Port sampling compliance

## New License holders assistance

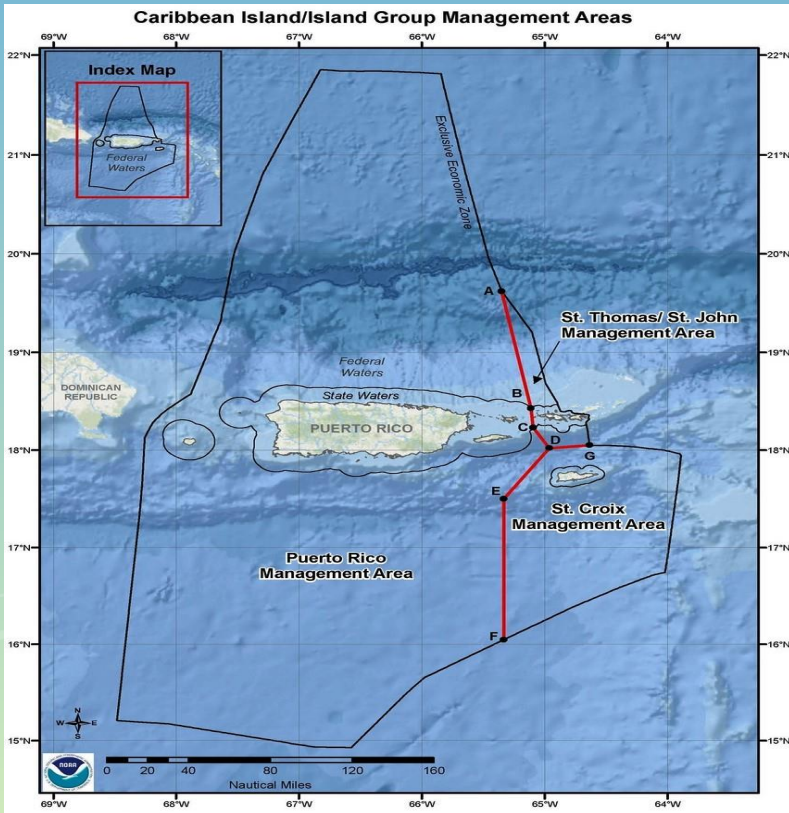
Guiding new Commercial Fishers through the steps to register and reviewing the fisher handbook.

## Creation of a WhatsApp broadcast.

Sending out announcements and information as passed on by the Division of Fish and Wildlife. Survey and Studies Flyers.

# Video Content for interest and information

## Explaining the Red line / Fishermen, Fisheries and our Food Videos







**Thank You**